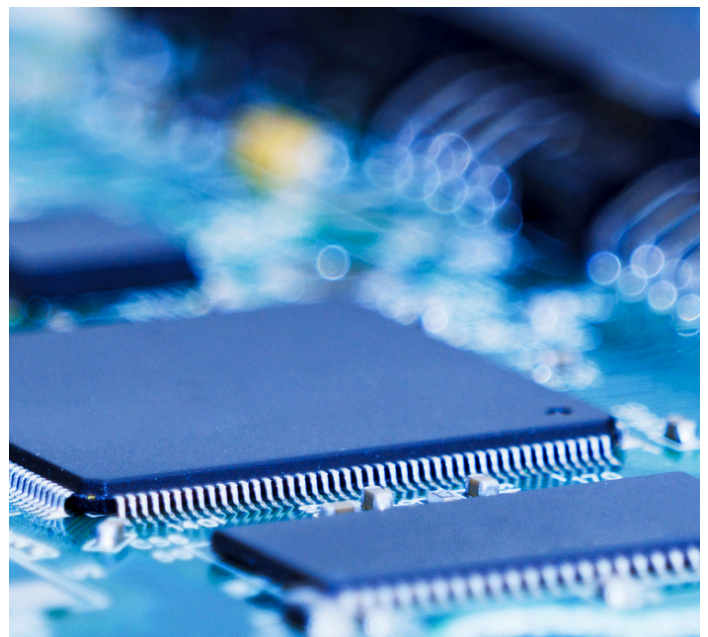
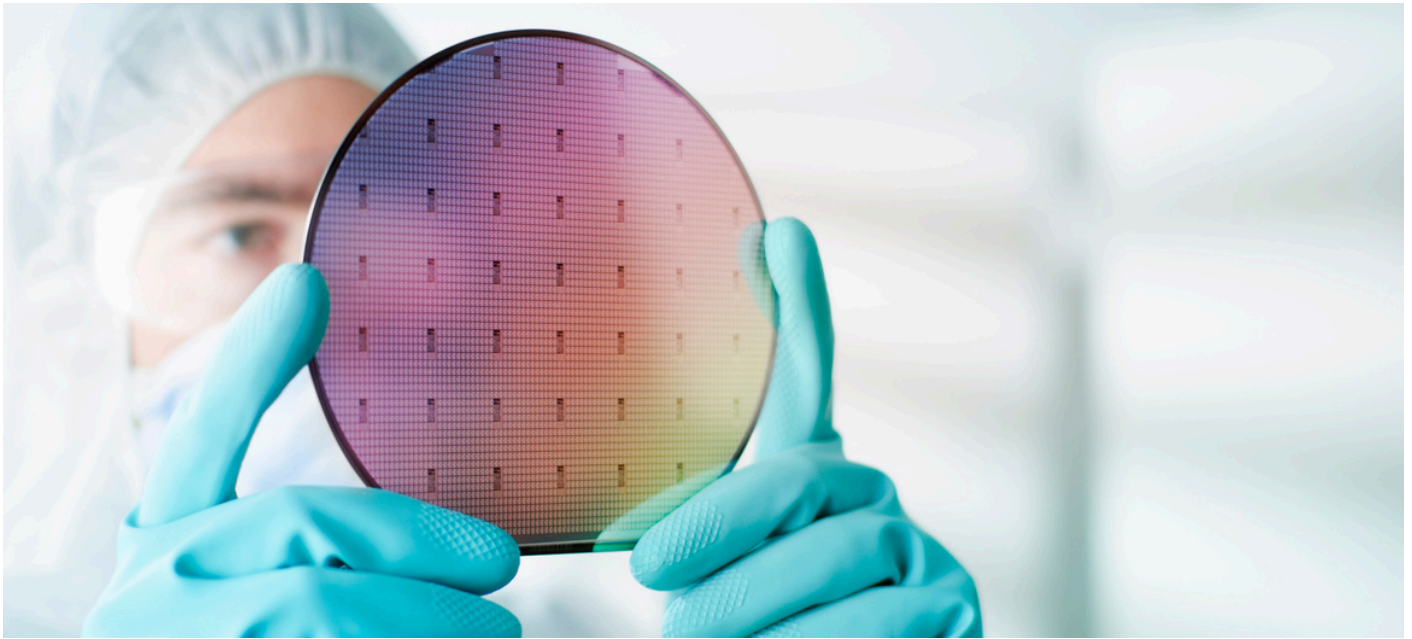


# CLEANROOM APPLICATIONS

Pacific Integrated Handling (PIH) offers specialized solutions aimed at improving the sanitation and efficiency of cleanroom environments. Our products and systems are meticulously designed to meet the strict standards of sterility and contamination control required in these areas. This ensures seamless integration while boosting operational performance and safety.



# TABLE OF CONTENTS

- 1 Gownrooms**
- 2 Gownrooms: Continued**
- 3 Platforms**
- 4 Carts**
- 5 Workstations**
- 6 Tables**
- 7 Guarding**
- 8 Contact**

# GOWNROOMS

Gownrooms are designed for cleanliness and order, providing a controlled environment where personnel can prepare for sterile or specialized work conditions. Well-organized spaces and materials ensure a seamless transition into cleanroom areas, maintaining hygiene and compliance standards. Equipped with specialized storage and changing areas, these rooms minimize contamination risks and support strict cleanliness protocols. Integrated ventilation systems, along with non-porous surfaces and disposable garment options, further enhance sanitary conditions, ensuring that all personnel adhere to safety and hygiene practices effectively.



## Garment Rack

- Available in single or double-sided configuration
- Custom fabricated to hold on any number of gowns
- End panels and wing sections can be excluded if preferred
- Leveling feet have slotted holes for anchoring to an RMF



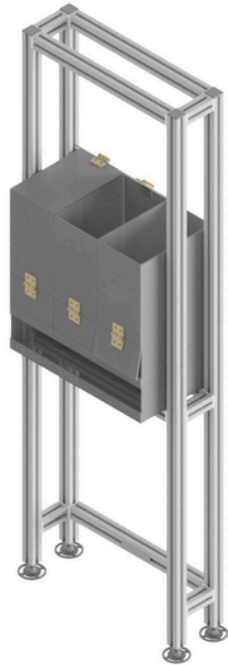
## Lean Rail with Benches

- Available with benches on one or both sides
- Can be configured in any custom size or your choice
- Available with or without lower shelves
- Lower shelves are perforated to help maximize airflow
- Lean rail is open for common placement of waste receptacle
- Leveling feet have slotted holes for anchoring to an RMF



## Wipe Down Table

- Available in any custom size of your choice
- Perforated tabletop to maximize airflow and prevent collection of particulates
- Flat sided profiles used where no t-slots are needed to provide a clean finish
- Leveling feet have slotted holes for anchoring to an RMF



## Goggle Kiosk

- Available in any custom size of your choice
- Goggle compartment customizable with your choice of open top, lids, number of compartments, etc.
- Leveling feet have slotted holes for anchoring to a RMF.



## Sort Table

- Available in any custom size of your choice
- Shelf and cubby count and sizes can be configured to a configuration that best suits your needs
- Perforated shelved to maximize airflow and prevent collection of particulates
- Solid or perforated work surface available
- Leveling feet have slotted holes for anchoring to a RMF

# PLATFORMS

Platforms are engineered for stable support and versatility. Wide, robust bases ensure stability under heavy weights, enhancing safety and efficiency in transport. They are designed with user-friendly features, including non-slip surfaces and ergonomic heights, to facilitate easy loading and unloading. Additionally, these platforms can be customized with various accessories, such as guardrails and ramps, to meet specific operational needs and improve workflow in diverse industrial environments. Their durable construction and adaptability make them ideal for various applications, from manufacturing floors to warehouse storage.



## Step Platforms

- Available in the custom size of your choice, while keeping OSHA standards in mind
- Available with a Diamond tread surface for the best non-slip grip
- It is also available with a perforated surface for areas where maximum airflow is required



## Rolling Ladder Platform

- Available in the custom size of your choice, while keeping OSHA standards in mind
- Available with a Diamond tread surface for the best non-slip grip
- The bottom shelf acts as a storage area for small tools
- Heavy-duty swivel locking casters for ease of mobility while providing a sturdy foundation
- Floor locks and/or outriggers are also available upon request
- Tool tray folds down to minimize footprint during transportation and storage

# CARTS

Carts are designed with ease of mobility in mind. Large heavy-duty casters support heavy loads while keeping them easily maneuverable. These carts are constructed with durable materials to withstand the rigors of daily use and come equipped with ergonomic handles and smooth rolling mechanisms, ensuring comfortable operation over various terrains. Additionally, they feature customizable shelving and compartments, allowing for the organized transportation of tools, materials, and equipment. Their versatile design ensures they meet the dynamic needs of warehouses, workshops, and retail environments, enhancing productivity and operational efficiency.



## Material Transport Cart

- Available in custom size of your choice
- Solid top for smooth transfer of material
- Perforated shelf for maximum airflow
- The top and shelf are fully customizable to work best in environmental conditions



## Rolling Rack

- Available in a custom size of your choice
- Rolling Rack with multiple shelves
- Perforated surfaces to maximize airflow



## PM Cart

- For example cart designed with Polypropylene for its high chemical resistant properties
- Also keeping Fire safety in mind, this material meets FM410 rating requirements
- Available in custom size of your choice
- Shelves are available in an open configuration, with in a closed configuration with or without locking door.

# WORKSTATIONS

Workstations are designed for optimal productivity and ergonomics. Adjustable heights and spacious surfaces enhance comfort and efficiency, accommodating diverse tasks. Integrated storage solutions, such as drawers and shelves, keep essential tools and documents within reach. These workstations are made with durable materials and withstand daily use while maintaining aesthetic appeal. They support seamless technology integration with built-in cable management and power access, ensuring a clutter-free, organized workspace. Additionally, the design adapts to the evolving needs of modern professionals, promoting overall well-being in various work environments.



## Command Center Workstation

- Available with Dual or Triple monitor capacity
- Mobile along with seismic brackets to anchor to RMF for long term replacement
- Large perforated work surface
- Height adjustable worksurface to accommodate sit/stand work environment for people of all heights
- Independent height adjustable monitor brackets

# TABLES

Platforms are engineered for stable support and versatility. Wide, robust bases ensure stability under heavy weights, enhancing safety and efficiency in transport. They are designed with user-friendly features, including non-slip surfaces and ergonomic heights, to facilitate easy loading and unloading. Additionally, these platforms can be customized with various accessories, such as guardrails and ramps, to meet specific operational needs and improve workflow in diverse industrial environments. Their durable construction and adaptability make them ideal for various applications, from manufacturing floors to warehouse storage.



## Perforated Table

- Available in any custom size of your choice
- Solid or perforated worksurface
- Leveling feet have slotted holes for anchoring to a RMF



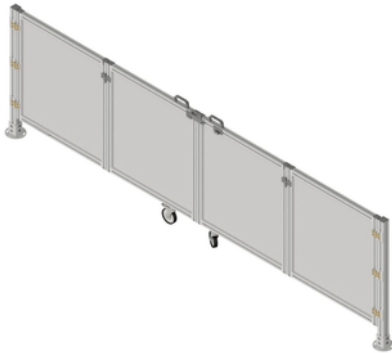
## Height Adjustable Ergo Table

- Available in any custom size of your choice
- Solid or perforated worksurface
- Leveling feet have slotted holes for anchoring to a RMF
- Height adjustable range of 650mm (25.6") to accommodate comfortable sit/stand environments



# GUARDING

Carts are designed with ease of mobility in mind. Large heavy-duty casters support heavy loads while keeping them easily maneuverable. These carts are constructed with durable materials to withstand the rigors of daily use and come equipped with ergonomic handles and smooth rolling mechanisms, ensuring comfortable operation over various terrains. Additionally, they feature customizable shelving and compartments, allowing for the organized transportation of tools, materials, and equipment. Their versatile design ensures they meet the dynamic needs of warehouses, workshops, and retail environments, enhancing productivity and operational efficiency.



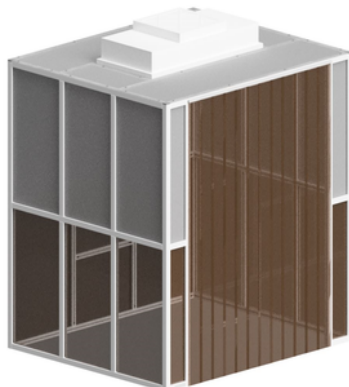
## Tool Protection

- Guarding provides a safety barrier to protect tools in high-traffic areas of the fab
- Ideal for blocking off tools during maintenance and servicing
- Custom-designed for proper fit and function to protect all types of tools
- Common configurations include: Fixed Fence, Removable lift-off fence, and Bi-Fold/Tri-Fold



## Segregation Curtain

- Framing designed to mount to the cleanroom ceiling grid
- Available in any size and custom configurations to suit your space
- Curtain slide smoothly back and forth to provide clearance to perform tasks commonly in Copper/Non-Copper parts of the Fab



## Flowbox

- Modular cleanroom enclosure designed to meet your size and specifications
- Common materials to choose from are clear and tinted polycarbonates
- Polysim Curtain strip entry way
- Hepa Filter as an available option

# GET IN TOUCH



📍 10215 Portland Ave E. Ste A Tacoma, WA 98445  
4109 Lindbergh Drive Addison, TX 75001

✉️ [mtaravella@pacificintegrated.com](mailto:mtaravella@pacificintegrated.com)

👉 [pacificintegrated.com](http://pacificintegrated.com)

☎️ 253-548-5395

